

GENERAL NOTES:

1. STORM PANEL SHOWN ON THIS PRODUCT EVALUATION DOCUMENT (P.E.D.) HAS BEEN VERIFIED FOR COMPLIANCE IN ACCORDANCE WITH THE 2017 (6th EDITION) OF THE FLORIDA BUILDING CODE. THIS STORM PANEL SYSTEM SHALL **NOT** BE INSTALLED AT HIGH VELOCITY HURRICANE ZONES (MIAMI-DADE / BROWARD COUNTY).

DESIGN WIND LOADS SHALL BE DETERMINED AS PER SECTION 1609 OF THE ABOVE MENTIONED CODE. FOR A WIND SPEED AS REQUIRED BY THE JURISDICTION WHERE THESE SHUTTERS WILL BE INSTALLED AND FOR A DIRECTIONALITY FACTOR $K_d=0.85$, USING ASCE 7-10 FOR INSTALLATIONS UNDER 2017 FBC AND SHALL NOT EXCEED THE MAXIMUM (A.S.D.) DESIGN PRESSURE RATINGS INDICATED ON SHEETS 3 & 6. IN ORDER TO VERIFY THE ABOVE CONDITION, ULTIMATE DESIGN WIND LOADS DETERMINED PER ASCE 7-10 SHALL BE FIRST REDUCED TO A.S.D. DESIGN WIND LOADS BY MULTIPLYING THEM BY 0.6 IN ORDER TO COMPARE THESE W/ MAX. (A.S.D.) DESIGN PRESSURE RATINGS INDICATED ON SHEETS 3 & 6.

STORM PANEL'S ADEQUACY FOR IMPACT AND WIND RESISTANCE HAS BEEN VERIFIED IN ACCORDANCE WITH SECTION 1609.1.2 OF THE ABOVE MENTIONED CODE AS PER ATLSF REPORT # 0615.01-11 & ATL REPORT # 0302.01-10R PER ASTM E 1886 & E 1996, & ASTM E 330-02 STANDARD.

2. CLEAR BERTHA STORM PANEL SHALL BE EXTRUDED USING ANY OF THE FOLLOWING POLYCARBONATE SOURCES WITH THEIR CORRESPONDING MODEL NUMBER:

GENERAL ELECTRIC PLASTICS	LEXAN 103
DOWN CHEMICAL	CALIBRE 302 V-6
CAVESTRO LLC.	MAKROLON POLYCARBONATE SHEETS

MINIMUM PROPERTIES FOR ALL OF THE ABOVE POLYCARBONATES ARE AS FOLLOWS:

TYPICAL PROPERTIES	APPLICABLE STANDARD REFERENCE	RESULT
PHYSICAL:		
SPECIFIC GRAVITY	ASTM D792	1.20 g/cc
MECHANICAL:		
TENSILE YIELD STRENGTH	ASTM D638	8,700 p.s.i.
FLEXURAL STRENGTH AT YIELD	ASTM D790	12,500 p.s.i.
FLEXURAL MODULUS	ASTM D790	340,000 p.s.i.
IMPACT:		
NOTCHED IZOD	ASTM D256	18 FT-lb/in
FIRE BURNING CHARACTERISTICS:		
SMOKE DENSITY	ASTM D2843	75 (MAX)
RATE OF BURNING	ASTM D635	C-1 CLASS (MAX)
SELF IGNITION	ASTM D1929	650 °F

3. ALL ALUMINUM EXTRUSIONS SHALL BE ALUMINUM ASSOCIATION 6063-T6 ALLOY & TEMPER.

4. ALL SCREWS TO BE STAINLESS STEEL 304 OR 316 AISI SERIES OR CORROSION RESISTANT COATED CARBON STEEL AS PER DIN 50018 W/ 50 KSI YIELD STRENGTH AND 90 KSI TENSILE STRENGTH & SHALL COMPLY W/ FLORIDA BUILDING CODE SECTION 2411.3.3.4.

5. BOLTS TO BE ASTM A 307, GALVANIZED OR AISI 304 SERIES STAINLESS STEEL, WITH 36 KSI MIN. YIELD STRENGTH.

6. ANCHORS TO WALL SHALL BE AS FOLLOWS: SEE SHEET 2 OF 5 FOR APPLICATIONS.

(A) TO EXISTING POURED CONCRETE: MIN. $f'_c = 3$ KSI
 -1/4" Ø TAPCON ANCHORS MANUFACTURED BY I.T.W. BUILDEX OR ELCO CONSTRUCTION PRODUCTS & 1/4" Ø BLUE TAP ANCHORS AS MANUFACTURED BY FLORIDA FASTENERS DIRECT, INC.
 -1/4" Ø ELCO MALE "PANELMATE" MANUFACTURED BY ELCO CONSTRUCTION PRODUCTS.
 -1/4" Ø X 3/4" ALL POINTS SOLID-SET ANCHORS AS DISTRIBUTED BY ALL POINTS SCREW, BOLT & SPECIALTY COMPANY.
 -1/2" OD X 2 1/8" ENX312 PANELMATE INSERTS, AS MANUFACTURED BY ELCO CONSTRUCTION PRODUCTS.

NOTES:

A.1) MINIMUM EMBEDMENT INTO POURED CONCRETE OF TAPCON, BLUE TAP ANCHORS AND ELCO PANELMATES IS 1 3/4".
 A.2) 3/4" SOLID SET ANCHORS SHALL BE ENTIRELY EMBEDDED INTO THE POURED CONCRETE.
 NO EMBEDMENT INTO STUCCO SHALL BE PERMITTED.
 1/4" Ø-20 SCREWS USED SHALL BE 1 1/2" LONG MINIMUM SHOULD STUCCO EXIST, AND 1" MINIMUM FOR WALLS WITH NO STUCCO. SCREWS SHALL BE 304 SERIES STAINLESS STEEL W/ 3/4" Ø HEAD SIDEWALK BOLTS.

A.3) MINIMUM EMBEDMENT INTO CONCRETE OF PANELMATE INSERTS IS 1 5/8". NO EMBEDMENT INTO STUCCO SHALL BE PERMITTED. 5/16" Ø -18 304 SERIES STAINLESS STEEL SCREWS USED SHALL PENETRATE 1" MIN. INTO ANCHOR.

A.4) IN CASE THAT PRECAST STONE, PRECAST CONCRETE PANELS, OR PAVERS BE FOUND ON THE EXISTING WALL OR FLOOR, ANCHORS SHALL BE LONG ENOUGH TO REACH THE MAIN STRUCTURE BEHIND SUCH PANELS, ANCHORAGE SHALL BE AS INDICATED ON NOTES A.1) A.2) & A.3).

(B) TO EXISTING CONCRETE BLOCK WALL: ASTM C-90

-1/4" Ø TAPCON ANCHORS MANUFACTURED BY I.T.W. BUILDEX OR ELCO CONSTRUCTION PRODUCTS & 1/4" Ø BLUE TAP ANCHORS, AS MANUFACTURED BY FLORIDA FASTENERS, INC.
 -1/4" Ø ELCO MALE "PANELMATE" MANUFACTURED BY ELCO CONSTRUCTION PRODUCTS.
 -1/4" Ø X 3/4" ALL POINTS SOLID-SET ANCHORS AS DISTRIBUTED BY ALL POINTS SCREW, BOLT & SPECIALTY COMPANY.

NOTES:

B.1) MINIMUM EMBEDMENT OF TAPCON, BLUE TAP ANCHORS AND ELCO PANELMATES INTO THE CONCRETE BLOCK UNIT SHALL BE 1 1/4"

B.2) 3/4" SOLID SET ANCHORS SHALL BE ENTIRELY EMBEDDED INTO THE CONCRETE BLOCK UNIT. NO EMBEDMENT INTO STUCCO SHALL BE PERMITTED.

1/4" Ø-20 SCREWS USED SHALL BE 1 1/2" LONG MINIMUM SHOULD STUCCO EXIST, AND 1" MINIMUM FOR WALLS WITH NO STUCCO.

B.3) IN CASE THAT PRECAST STONE OR PRECAST CONCRETE PANELS BE FOUND ON THE EXISTING WALL, ANCHORS SHALL BE LONG ENOUGH TO REACH THE MAIN STRUCTURE BEHIND SUCH PANELS. ANCHORAGE SHALL BE AS INDICATED ON NOTES IN B.1) & B.2) ABOVE.

(C) ANCHORS SHALL BE INSTALLED FOLLOWING ALL OF THE RECOMMENDATIONS AND SPECIFICATIONS OF THE ANCHOR'S MANUFACTURER.

7. PANEL MAY ALSO BE INSTALLED HORIZONTALLY FOLLOWING INSTALLATION DETAILS SHOWN ON SECTIONS 1 THRU 4, SHEETS 4 & 5

8. STORM PANEL SHALL BE REMOVED AFTER THE HURRICANE AND SHALL BE STORED AND PROPERLY MAINTAINED.

9. IT SHALL BE THE RESPONSIBILITY OF THE CONTRACTOR TO VERIFY THE SOUNDNESS OF THE STRUCTURE WHERE SHUTTER IS TO BE ATTACHED TO INSURE PROPER ANCHORAGE.

10. SHUTTER MANUFACTURER'S LABEL SHALL BE LOCATED ON A READILY VISIBLE LOCATION AT STORM PANEL SHUTTER IN ACCORDANCE WITH SECTION 1709.9.3 OF FLORIDA BUILDING CODE. ONE LABEL SHALL BE PLACED FOR EVERY OPENING. LABELING TO COMPLY WITH SECTION 1709.9.2 OF THE FLORIDA BUILDING CODE.

11. THE INSTALLATION CONTRACTOR IS TO SEAL/GULK ALL SHUTTER COMPONENT EDGES WHICH REMAIN IN CONTINUOUS CONTACT WITH THE BUILDING TO PREVENT WIND/RAIN INTRUSION. CAULK AND SEAL SHUTTER TRACKS ALL AROUND FULL LENGTH.

12. STORM PANEL INSTALLATION SHALL COMPLY WITH SPECS INDICATED IN THIS DRAWING PLUS ANY BUILDING AND ZONING REGULATIONS PROVIDED BY THE JURISDICTION WHERE PERMIT IS APPLIED TO.

13. (A) THIS P.E.D. PREPARED BY THIS ENGINEER IS GENERIC AND DOES NOT PROVIDE INFORMATION FOR A SITE SPECIFIC PROJECT; I.E. WHERE THE SITE CONDITIONS DEVIATE FROM THE P.E.D.

(B) CONTRACTOR TO BE RESPONSIBLE FOR THE SELECTION, PURCHASE AND INSTALLATION INCLUDING LIFE SAFETY OF THIS PRODUCT, BASED ON THIS P.E.D. PROVIDED HE/SHE DOES NOT DEVIATE FROM THE CONDITIONS DETAILED ON THIS DOCUMENT. CONSTRUCTION SAFETY AT SITE IS THE CONTRACTOR'S RESPONSIBILITY.

(C) THIS P.E.D. WILL BE CONSIDERED INVALID IF ALTERED BY ANY MEANS.

(D) SITE SPECIFIC PROJECTS SHALL BE PREPARED BY A FLORIDA REGISTERED ENGINEER OR ARCHITECT WHICH WILL BECOME THE ENGINEER OF RECORD (E.O.R.) FOR THE PROJECT AND WHO WILL BE RESPONSIBLE FOR THE PROPER USE OF THE P.E.D. ENGINEER OF RECORD, ACTING AS A DELEGATED ENGINEER TO THE P.E.D. ENGINEER, SHALL SUBMIT TO THIS LATTER THE SITE SPECIFIC DRAWINGS FOR REVIEW.

(E) THIS P.E.D. SHALL BEAR THE DATE AND ORIGINAL SEAL AND SIGNATURE OF THE PROFESSIONAL ENGINEER OF RECORD THAT PREPARED IT.

THIS DRAWING SHALL ONLY BE USED TO OBTAIN PERMITS IN THE STATE OF FLORIDA

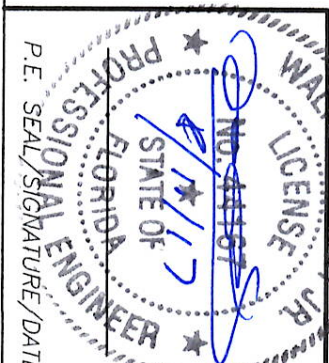
FLORIDA BUILDING CODE (Non High Velocity Hurricane Zone)

CLEAR BERTHA STORM PANEL
(2.00" DEEP)

EASTERN METAL SUPPLY, INC

4288 WEST ROADS DRIVE
WEST PALM BEACH, FL 33407

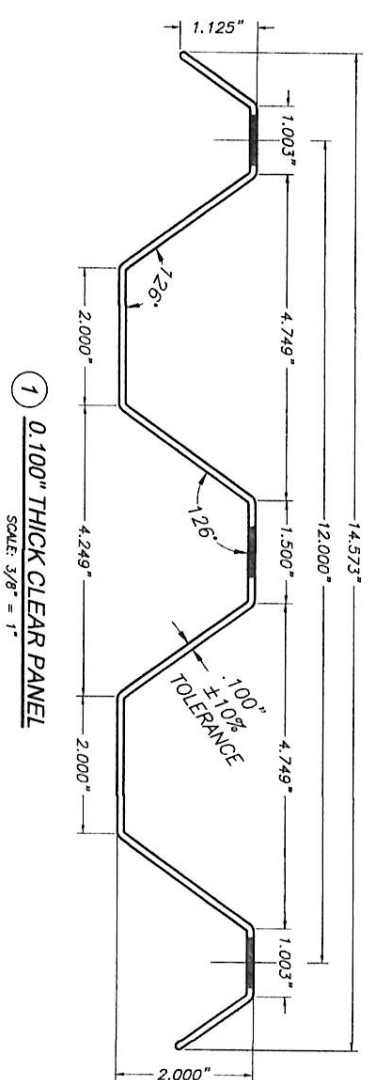
TILECO INC.
TILITEC TESTING & ENGINEERING COMPANY
6355 W. 36th St., Suite 302, Virginia Gardens, FL 33166
Phone : (305) 981-1100
Fax : (305) 981-1531
E-mail: tileco@tileco.com
EB-0006719
WALTER A. TILIT JR., P.E.
FLORIDA LIC. # 44167



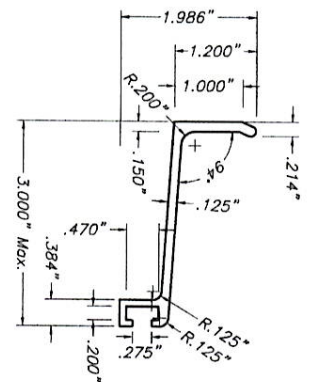
REV. NO.	DESCRIPTION	DATE	REV. NO.	DESCRIPTION	DATE
1	QLD 15-040	07/21/17	3		
2			4		

17-088
DRAWING NO

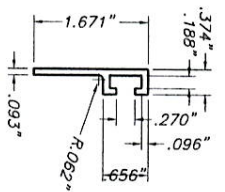
SHEET 1 OF 6



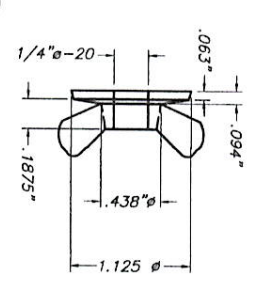
1 0.100" THICK CLEAR PANEL
SCALE: 3/8" = 1"



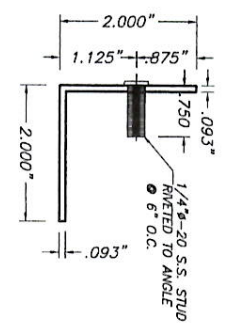
2 3" MAX ANGLE BUILD OUT BRACKET
SCALE: 3/8" = 1"



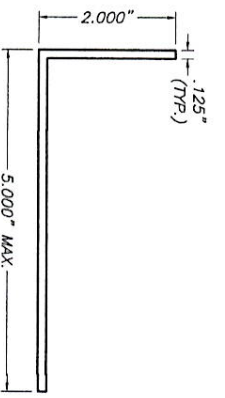
3 "F" TRACK
SCALE: 3/8" = 1"



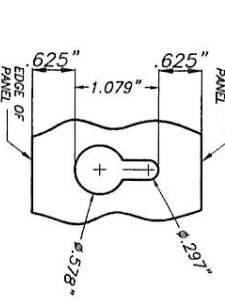
4 WASHERED WING NUT
ZAMAC NICKEL PLATE
WASHER WING NUT
SCALE: 3/8" = 1"



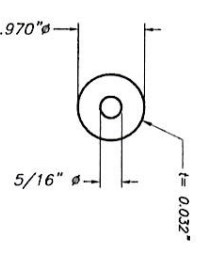
5 STUDDED ANGLE
6063-T5 ALUM. ALLOY
SCALE: 3/8" = 1"



6 BUILD OUT ANGLE
SCALE: 3/8" = 1"

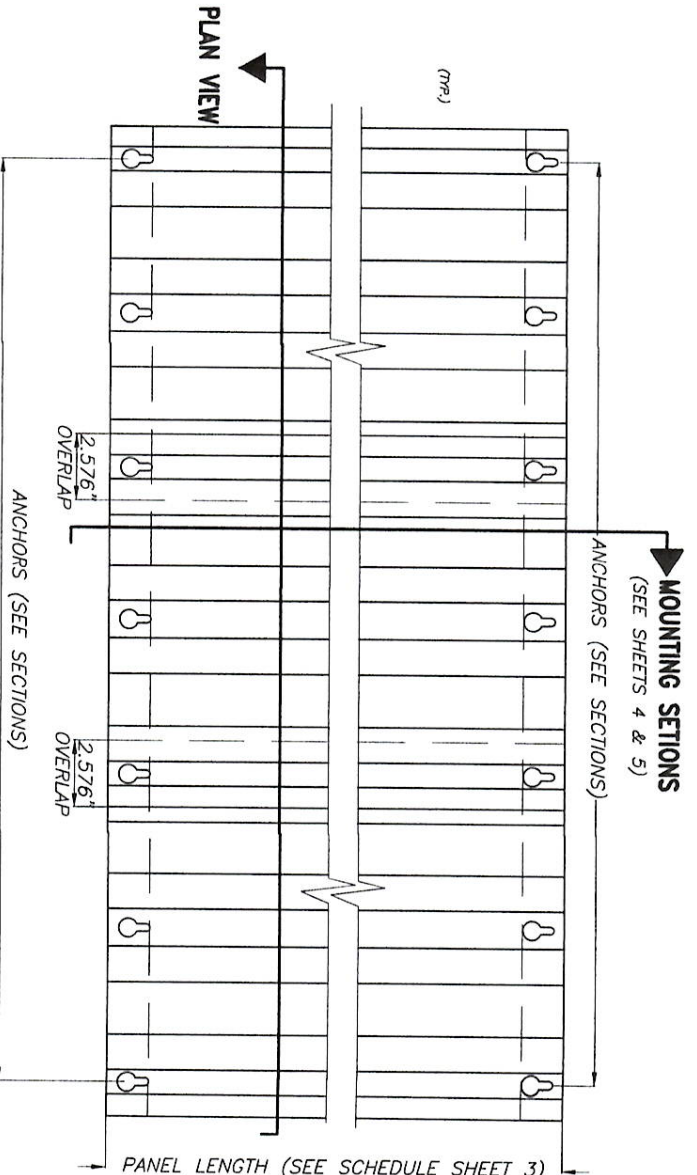


7 KEY HOLE AT PANEL
SCALE: 3/8" = 1"

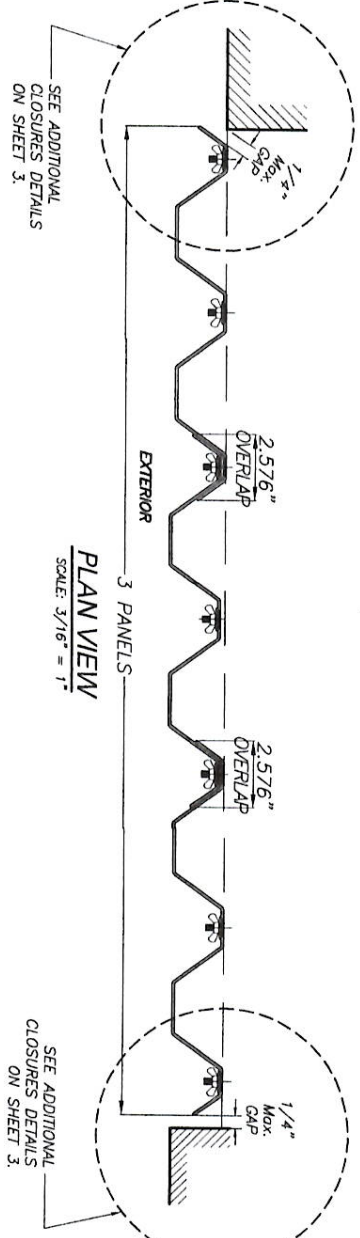


8 0.97" Ø G-60 GALV. OR S.S. FLAT STEEL BONDED
WASHER W/EPDM WASHER BACK UP
ASTM A-653 GRADE 40
OR ASTM A-653 GRADE 40

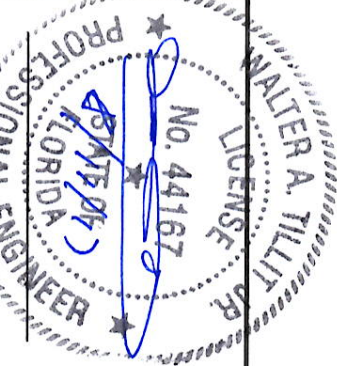
COMPONENTS



STORM PANEL TYPICAL ELEVATION
SCALE: 3/16" = 1"



PLAN VIEW
SCALE: 3/16" = 1"



P.E. SEAL/SIGNATURE/DATE

© 2017 TILTECO, INC.

FLORIDA BUILDING CODE (Non High Velocity Hurricane Zone)

CLEAR BERTHA STORM PANEL
(2.00" DEEP)

DRAWN BY: L.C.

DATE: 07/25/17

17-088
DRAWING No

SHEET 2 OF 6

TILTECO INC.
TILIT TESTING & ENGINEERING COMPANY
6355 N.W. 36th St., Ste. 305, Virginia Gardens, FL 33166
Phone: (305) 871-1530 Fax: (305) 871-1531
E-mail: info@tiliteco.com
WALTER A. TILIT Jr., P.E.
FLORIDA Lic. # 44167

EASTERN METAL SUPPLY, INC
4268 WEST ROADS DRIVE
WEST PALM BEACH, FL 33407

REV. NO.	DESCRIPTION	DATE	REV. NO.	DESCRIPTION	DATE
1	Q10 15-Q40	07/21/17	3		
2			4		

MAXIMUM A.S.D. DESIGN PRESSURE RATING (p.s.f.) WITH CORRESPONDING

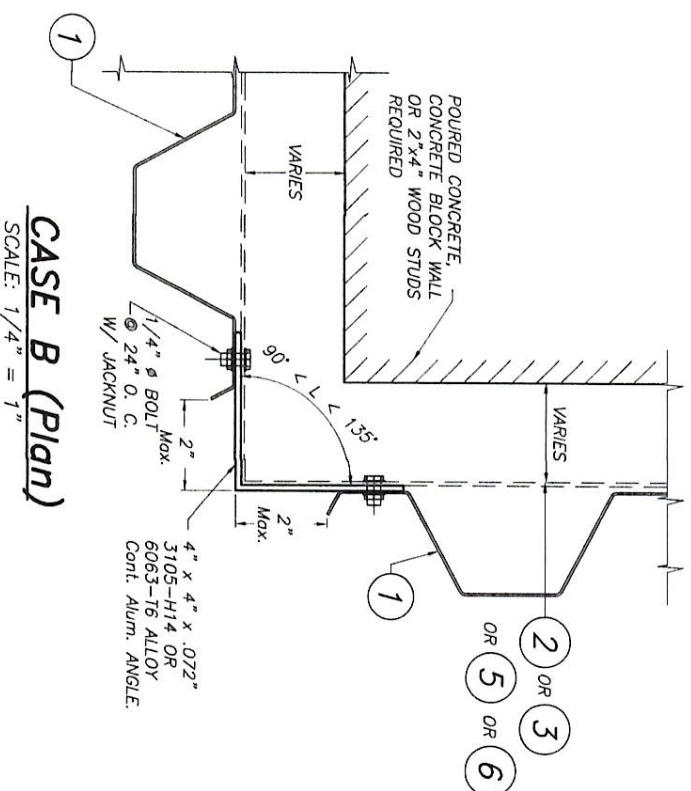
MAXIMUM PANEL LENGTH
 1" (ft.) VALID FOR INSTALLATIONS INTO POURED CONCRETE, CONCRETE BLOCK OR WOOD.

MAX. A.S.D. DESIGN PRESSURE RATING (p.s.f.)	MAXIMUM PANEL LENGTH L (ft.) *
60	7'-5"

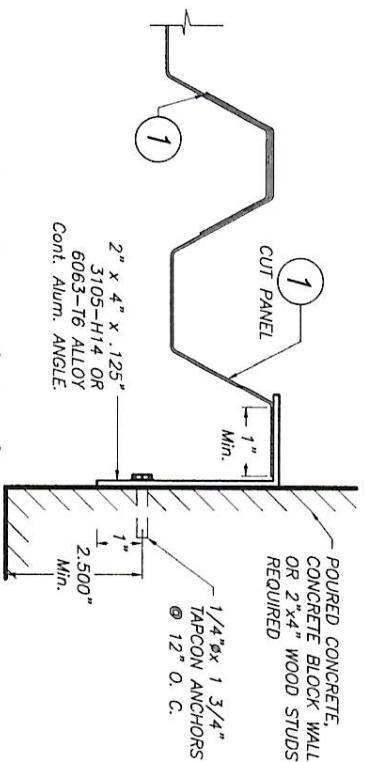
* Min. PANEL LENGTH IS 3'-0"

MIN. SEPARATION TO GLASS

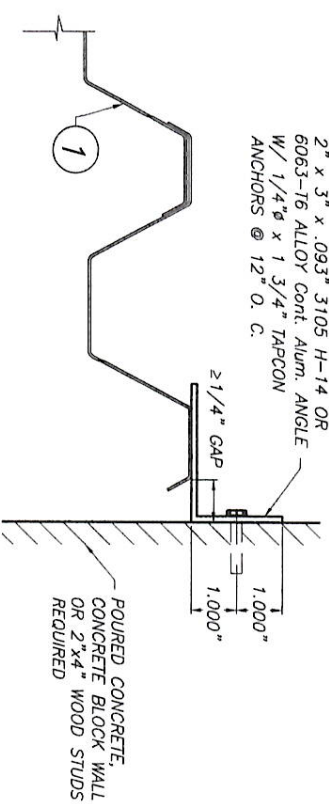
WIND ZONE	SEPARATION
1, 2 & 3	1"
4	9"



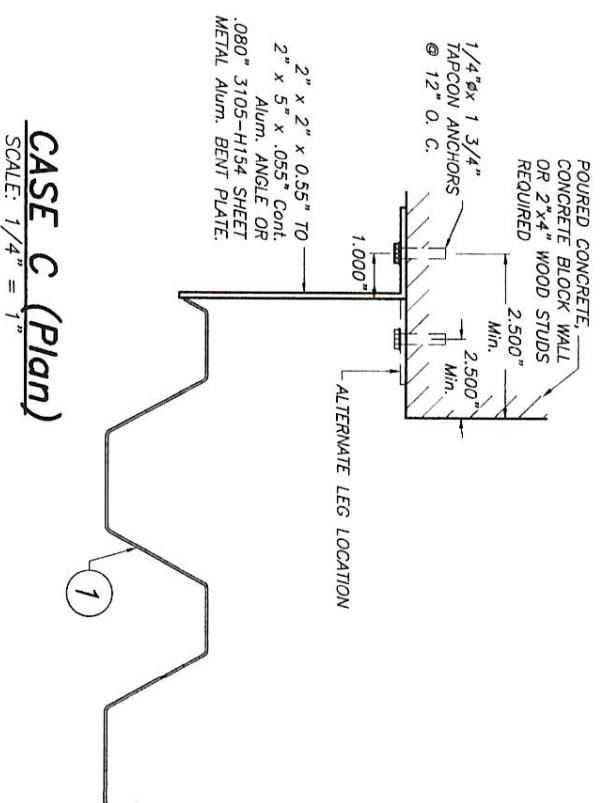
CASE B (Plan)
 SCALE: 1/4" = 1"



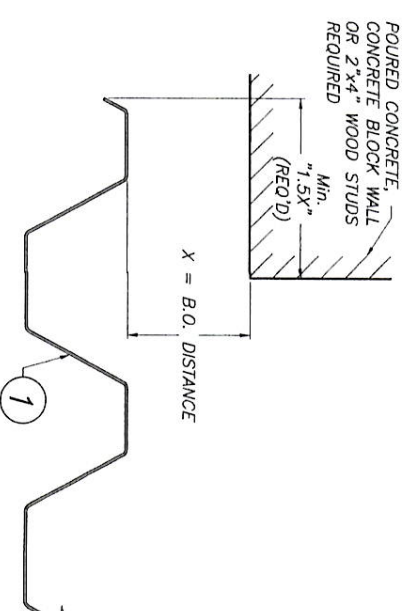
CASE A (Plan)
 SCALE: 1/4" = 1"



CASE D (Plan)
 SCALE: 1/4" = 1"

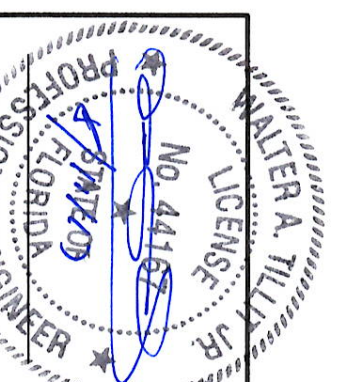


CASE C (Plan)
 SCALE: 1/4" = 1"



CASE E (Plan)
 SCALE: 1/4" = 1"

END CLOSURES DETAILS



P.E. SEAL/SIGNATURE/DATE

FLORIDA BUILDING CODE (Non High Velocity Hurricane Zone)

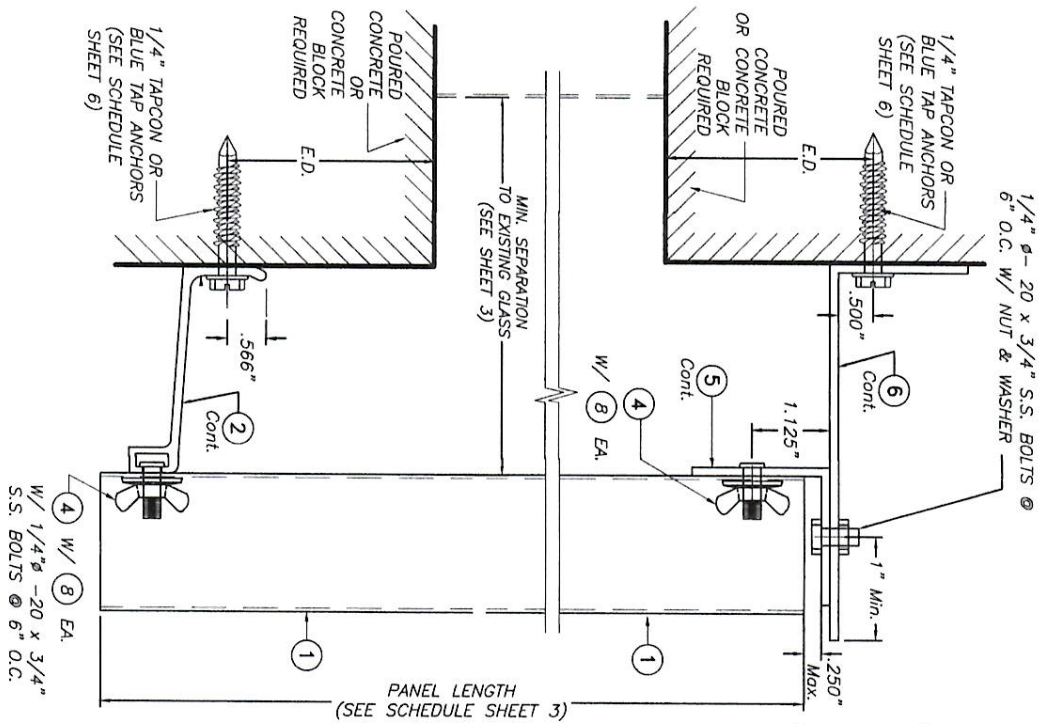
CLEAR BERTHA STORM PANEL (2.00" DEEP)

EASTERN METAL SUPPLY, INC
 4268 WEST ROADS DRIVE
 WEST PALM BEACH, FL 33407

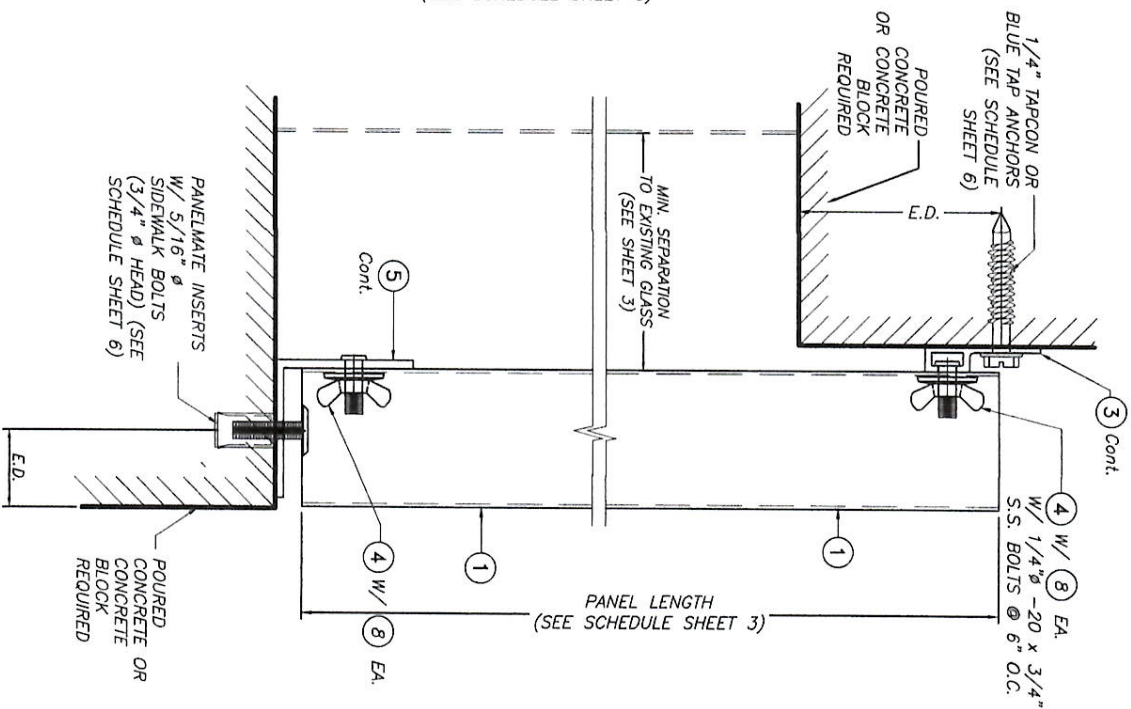
TILTECO INC.
 TILIT TESTING & ENGINEERING COMPANY
 6355 N.W. 36th St., Ste. 205, Virginia Gardens, FL 33166
 Phone: (305) 981-1331
 Fax: (305) 981-1331
 Email: info@tilteco.com
 EB-0006719
 WALTER A. TILIT Jr., P.E.
 FLORIDA Lic. # 44167

REV. No.	DESCRIPTION	DATE	REV. No.	DESCRIPTION	DATE
1	OLD 15-040	07/21/17	3		
2			4		

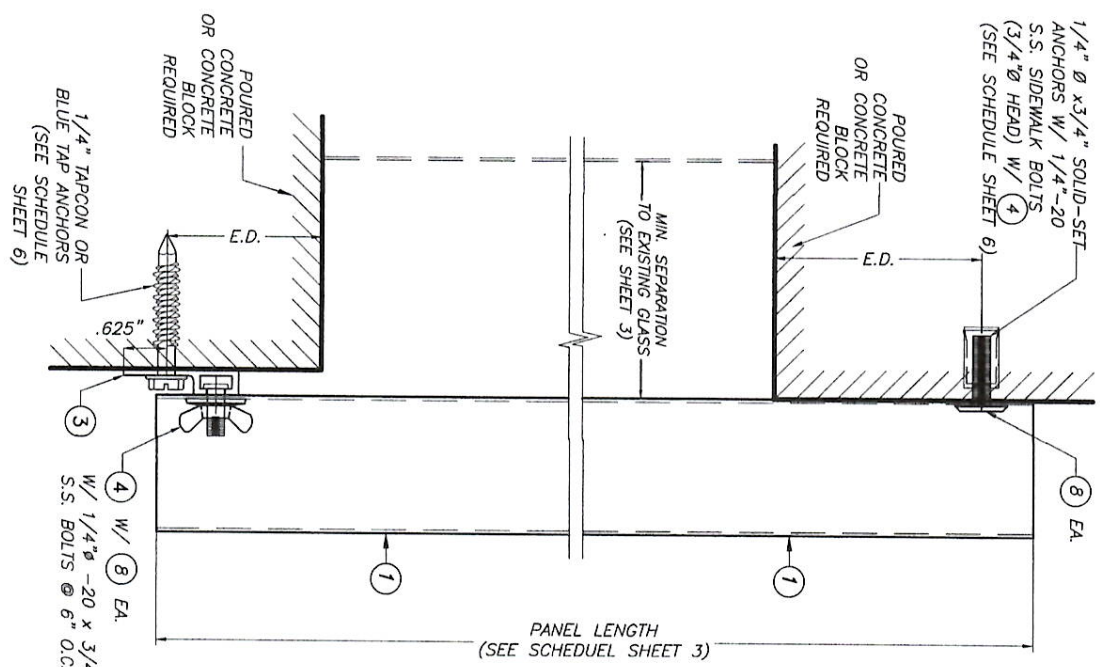
07/25/17
 DATE
 17-088
 DRAWING No
 SHEET 3 OF 6



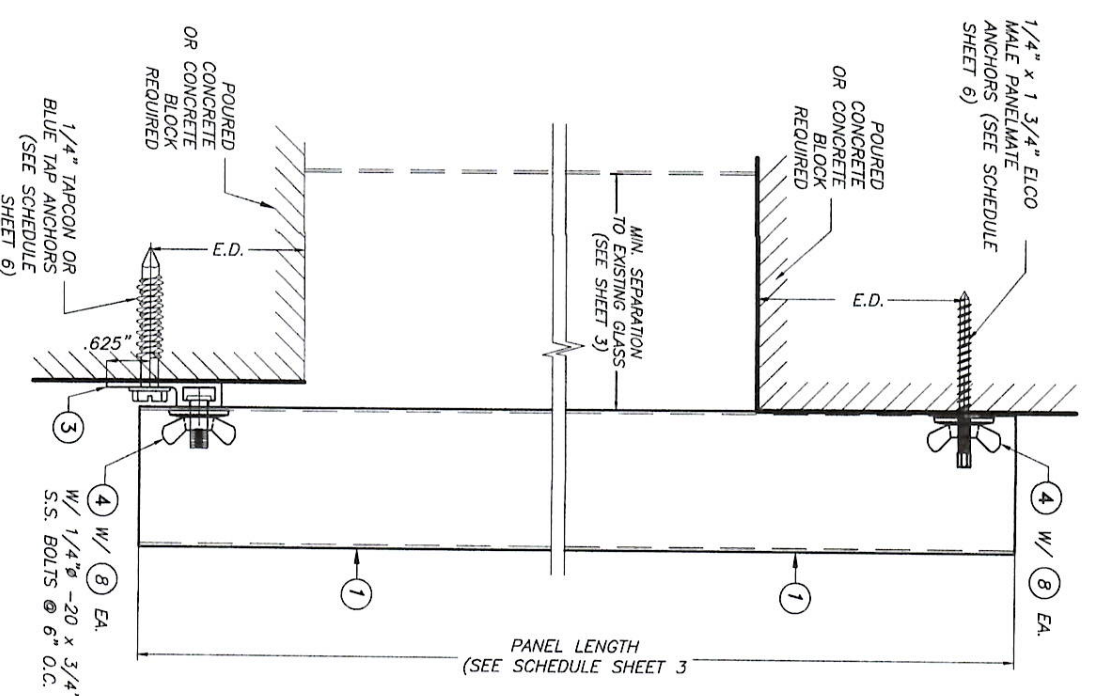
SECTION 1
SCALE : 3/8" = 1"



SECTION 2
SCALE : 3/8" = 1"



SECTION 3
SCALE : 3/8" = 1"

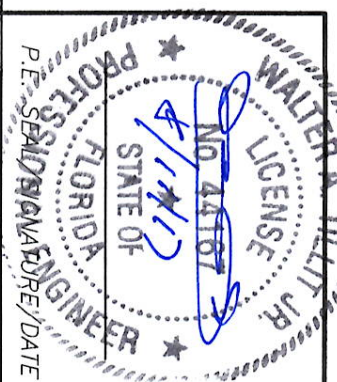


SECTION 4
SCALE : 3/8" = 1"

**INSTALLATION DETAILS ON EXISTING POURED CONCRETE
OR CONCRETE ON BLOCK BUILDINGS**

NOTE:
MOUNTING INSTALLATIONS MAY
BE COMBINED IN ANY WAY TO
SUIT ANY INSTALLATION.

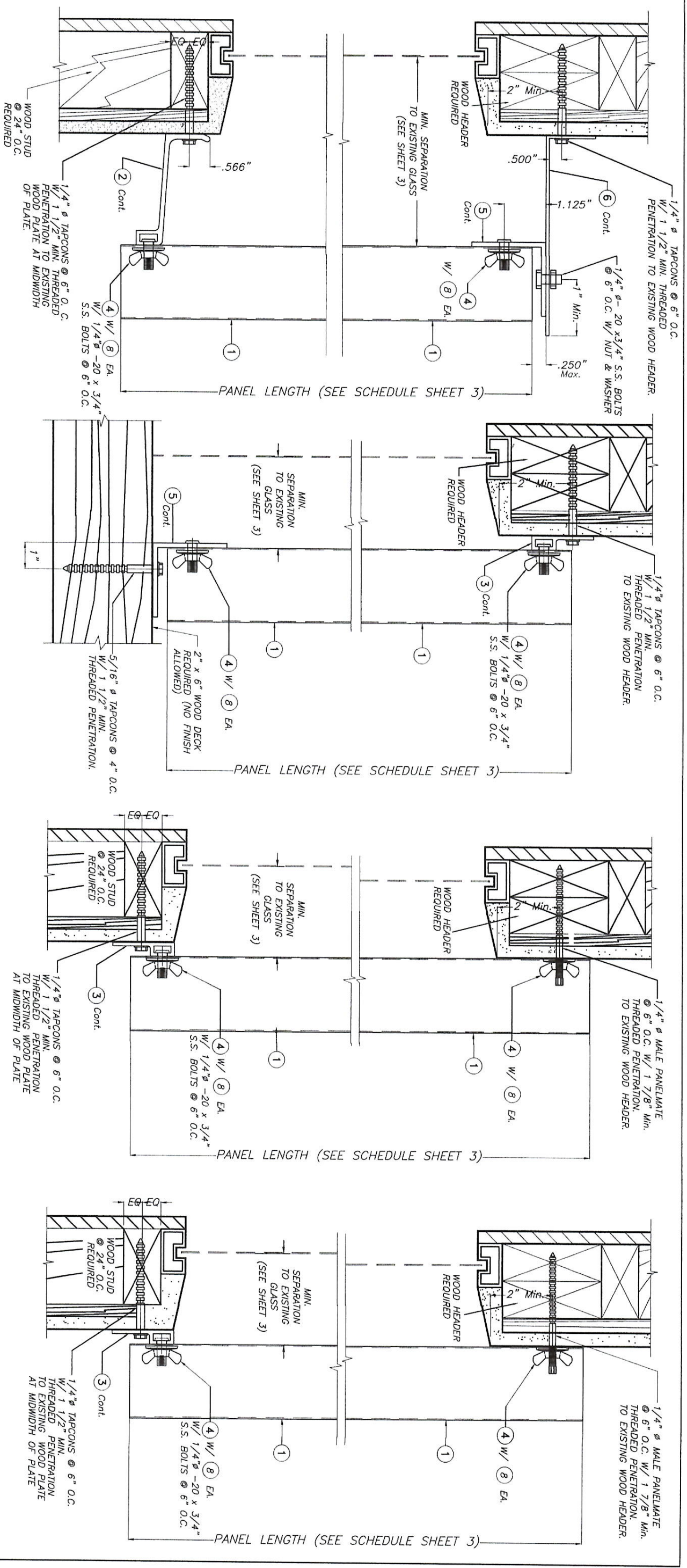
E. D. = EDGE DISTANCE
(SEE SCHEDULE ON
SHEET 6 OF 6)



© 2017 TILTECO, INC.
FLORIDA BUILDING CODE (Non High Velocity Hurricane Zone)
CLEAR BERTHA STORM PANEL
(2.00" DEEP)
TILTECO INC.
TILLIT TESTING & ENGINEERING COMPANY
6355 N.W. 36th St., Ste. 305, Virginia Gardens, Ft. 33166
Phone : (305)971-1530 Fax : (305)971-1531
www.tilteco.com
P.E. WALTER A. TILLIT Jr. P.E.
FLORIDA Lic. # 44167

FLORIDA BUILDING CODE (Non High Velocity Hurricane Zone)
CLEAR BERTHA STORM PANEL
(2.00" DEEP)
EASTERN METAL SUPPLY, INC
4268 WEST ROADS DRIVE
WEST PALM BEACH, FL 33407
DRAWN BY: L.C.
DATE: 07/25/17
17-088
DRAWING No
SHEET 4 OF 6

REV. No	DESCRIPTION	DATE	REV. No	DESCRIPTION	DATE
1	OLD 15-040	07/21/17	3		
2			4		



NOTE:
MOUNTING INSTALLATIONS MAY BE COMBINED IN ANY WAY TO SUIT ANY INSTALLATION.

INSTALLATION DETAILS ON EXISTING WOOD BUILDINGS



FLORIDA BUILDING CODE (Non High Velocity Hurricane Zone)

CLEAR BERTHA STORM PANEL
(2.00" DEEP)

TILTECO inc.
TILTUP TESTING & ENGINEERING COMPANY
6355W. 35th. St., Ste. 305, VIRGINIA GARDENS, FL 33166
Phone : (305)971-1530, Fax : (305)971-1531
E-MAIL : TILTUP@TILTECO.COM
WALTER A. TILTUP, P.E.
FLORIDA Lic. # 44167

EASTERN METAL SUPPLY, INC
4268 WEST ROADS DRIVE
WEST PALM BEACH, FL 33407

17-088
DRAWING No

REV. No	DESCRIPTION	DATE	REV. No	DESCRIPTION	DATE
1	QUD 15-040	07/21/17	3		
2			4		

07/25/17
DATE

SHEET 5 OF 6

MAXIMUM A.S.D. DESIGN PRESSURE RATING (p.s.f.) AND CORRESPONDING MAXIMUM ANCHOR SPACING SCHEDULE ONLY FOR INSTALLATIONS IN CONCRETE AND CONCRETE BLOCK STRUCTURES

MAXIMUM A.S.D. DESIGN PRESSURE RATING (p.s.f.)	MAXIMUM ANCHORS SPACING FOR E. D. = 3 1/2" *												APPLICABLE TO SECTIONS & ANY COMBINATION OF THEM	MAXIMUM PANEL LENGTH L (ft.)
	TAPCONS OR BLUE TAP TO CONCRETE		SOLID SET TO BLOCK		PANELMATE INSERT TO BLOCK		MALE PANELMATES TO CONCRETE		MALE PANELMATES TO BLOCK		TAPCONS OR BLUE TAP TO CONCRETE			
+35.0, -35.0 OR LESS	6"	6"	-	-	-	-	-	-	-	-	-	-	1 (TOP)	6'-0" OR LESS
	6"	6"	-	-	-	-	-	-	-	-	-	-	1 (BOTTOM)	
	6"	6"	-	-	-	-	-	-	-	-	-	-	2 (TOP)	
	6"	6"	-	-	-	-	-	-	-	-	-	-	2 (BOTTOM)	
+35.0, -35.0 OR LESS	-	-	-	-	-	4"	-	-	-	-	-	-	2 (TOP)	6'-0" OR LESS
	-	-	-	-	-	6"	-	-	-	-	-	-	2 (BOTTOM)	
	-	-	-	-	-	6"	-	-	-	-	-	-	3 (TOP)	
	-	-	-	-	-	6"	-	-	-	-	-	-	3 (BOTTOM)	
+35.0, -35.0 OR LESS	-	-	-	-	-	-	-	-	-	6"	-	-	4 (TOP)	6'-0" OR LESS
	6"	6"	-	-	-	-	-	-	-	-	-	-	4 (BOTTOM)	

MAXIMUM A.S.D. DESIGN PRESSURE RATING (p.s.f.)	MAXIMUM ANCHORS SPACING FOR E. D. = 3 1/2" *												APPLICABLE TO SECTIONS & ANY COMBINATION OF THEM	MAXIMUM PANEL LENGTH L (ft.)
	TAPCONS OR BLUE TAP TO CONCRETE		SOLID SET TO BLOCK		PANELMATE INSERT TO BLOCK		MALE PANELMATES TO CONCRETE		MALE PANELMATES TO BLOCK		TAPCONS OR BLUE TAP TO CONCRETE			
+35.0, -35.0 OR LESS	6"	6"	-	-	-	-	-	-	-	-	-	-	1 (TOP)	>6'-0" TO 7'-5"
	6"	6"	-	-	-	-	-	-	-	-	-	-	1 (BOTTOM)	
	6"	6"	-	-	-	-	-	-	-	-	-	-	2 (TOP)	
	6"	6"	-	-	-	-	-	-	-	-	-	-	2 (BOTTOM)	
+35.0, -35.0 OR LESS	-	-	-	-	-	4"	-	-	-	-	-	-	2 (TOP)	>6'-0" TO 7'-5"
	-	-	-	-	-	6"	-	-	-	-	-	-	2 (BOTTOM)	
	6"	6"	-	-	-	6"	-	-	-	-	-	-	3 (TOP)	
	6"	6"	-	-	-	6"	-	-	-	-	-	-	3 (BOTTOM)	
+35.0, -35.0 OR LESS	-	-	-	-	-	-	-	-	-	6"	-	-	4 (TOP)	>6'-0" TO 7'-5"
	6"	6"	-	-	-	-	-	-	-	-	-	-	4 (BOTTOM)	

MAXIMUM A.S.D. DESIGN PRESSURE RATING (p.s.f.)	MAXIMUM ANCHORS SPACING FOR E. D. = 3 1/2" *												APPLICABLE TO SECTIONS & ANY COMBINATION OF THEM	MAXIMUM PANEL LENGTH L (ft.)
	TAPCONS OR BLUE TAP TO CONCRETE		SOLID SET TO BLOCK		PANELMATE INSERT TO BLOCK		MALE PANELMATES TO CONCRETE		MALE PANELMATES TO BLOCK		TAPCONS OR BLUE TAP TO CONCRETE			
>35.0, -35.0 UP TO +60.0, -60.0	6"	6"	-	-	-	-	-	-	-	-	-	-	1 (TOP)	6'-0" OR LESS
	6"	6"	-	-	-	-	-	-	-	-	-	-	1 (BOTTOM)	
	6"	6"	-	-	-	-	-	-	-	-	-	-	2 (TOP)	
	6"	6"	-	-	-	-	-	-	-	-	-	-	2 (BOTTOM)	
>35.0, -35.0 UP TO +60.0, -60.0	-	-	-	-	-	4"	-	-	-	-	-	-	2 (TOP)	6'-0" OR LESS
	-	-	-	-	-	6"	-	-	-	-	-	-	2 (BOTTOM)	
	6"	6"	-	-	-	6"	-	-	-	-	-	-	3 (TOP)	
	6"	6"	-	-	-	6"	-	-	-	-	-	-	3 (BOTTOM)	
>35.0, -35.0 UP TO +60.0, -60.0	-	-	-	-	-	-	-	-	-	6"	-	-	4 (TOP)	6'-0" OR LESS
	6"	6"	-	-	-	-	-	-	-	-	-	-	4 (BOTTOM)	

MAXIMUM A.S.D. DESIGN PRESSURE RATING (p.s.f.)	MAXIMUM ANCHORS SPACING FOR E. D. = 3 1/2" *												APPLICABLE TO SECTIONS & ANY COMBINATION OF THEM	MAXIMUM PANEL LENGTH L (ft.)
	TAPCONS OR BLUE TAP TO CONCRETE		SOLID SET TO BLOCK		PANELMATE INSERT TO BLOCK		MALE PANELMATES TO CONCRETE		MALE PANELMATES TO BLOCK		TAPCONS OR BLUE TAP TO CONCRETE			
>35.0, -35.0 UP TO +60.0, -60.0	6"	6"	-	-	-	-	-	-	-	-	-	-	1 (TOP)	>6'-0" TO 7'-5"
	6"	6"	-	-	-	-	-	-	-	-	-	-	1 (BOTTOM)	
	6"	6"	-	-	-	-	-	-	-	-	-	-	2 (TOP)	
	6"	6"	-	-	-	-	-	-	-	-	-	-	2 (BOTTOM)	
>35.0, -35.0 UP TO +60.0, -60.0	-	-	-	-	-	4"	-	-	-	-	-	-	2 (TOP)	>6'-0" TO 7'-5"
	-	-	-	-	-	6"	-	-	-	-	-	-	2 (BOTTOM)	
	6"	6"	-	-	-	6"	-	-	-	-	-	-	3 (TOP)	
	6"	6"	-	-	-	6"	-	-	-	-	-	-	3 (BOTTOM)	
>35.0, -35.0 UP TO +60.0, -60.0	-	-	-	-	-	-	-	-	-	6"	-	-	4 (TOP)	>6'-0" TO 7'-5"
	6"	6"	-	-	-	-	-	-	-	-	-	-	4 (BOTTOM)	

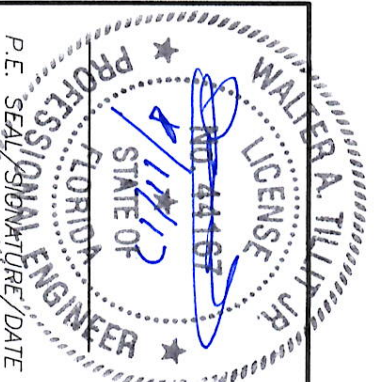
* MAXIMUM ANCHOR SPACINGS ARE VALID FOR 3 1/2" EDGE DISTANCE (EXCEPT FOR PANELMATE INSERTS WHERE E.D. = 4 1/2") FOR E.D. LESS THAN 3 1/2". REDUCE ANCHOR SPACING BY MULTIPLYING SPACING SHOWN ON SCHEDULE BY THE FOLLOWING FACTORS. (NOTE: MIN. E.D. FOR SOLID SET ANCHORS IS 3") FOR THIS OPERATION TO BE POSSIBLE. REDUCED SPACING OBTAINED USING FACTOR SHALL NOT BE LESS THAN MINIMUM SPACING INDICATED FOR EACH ANCHOR TYPE AT ANCHORS LEGEND.

ACTUAL E. D.	FACTOR			
	TAPCON, BLUE TAP, MALE PANELMATE	PANELMATE INSERTS	SOLID-SET	MALE PANELMATE INSERTS
4 1/2"	1.00	1.00	1.00	1.00
3"	.86	-	.78	-
2 1/2"	.71	-	-	-
2"	.50	-	-	-

ANCHORS LEGEND

ANCHOR TYPE	Min. ANCHOR SPACING
TAPCON, BLUE TAP OR MALE PANELMATE	3.0"
PANELMATE INSERTS	4.0"
SOLID-SET	3.5"

E. D. = EDGE DISTANCE



© 2017 TILTECO, INC.

FLORIDA BUILDING CODE (Non High Velocity Hurricane Zone)
CLEAR BERTHA STORM PANEL
(2.00" DEEP)

TILTECO INC.

TILIT TESTING & ENGINEERING COMPANY
6356 N.W. 38th St., Ste. 305, Virginia Gardens, FL 33166
Phone: (305)971-1530 Fax: (305)971-1531
E-mail: tiliteco@tiliteco.com
WALTER A. TILLET, P.E.
FLORIDA LIC. # 44167

EASTERN METAL SUPPLY, INC
4288 WEST ROADS DRIVE
WEST PALM BEACH, FL 33407

DRAWN BY: L.C.
DATE: 07/25/17
DRAWING No: 17-088
SHEET 6 OF 6

REV. No	DESCRIPTION	DATE	REV. No	DESCRIPTION	DATE
1	QLD 15-040	07/21/17	3		
2			4		